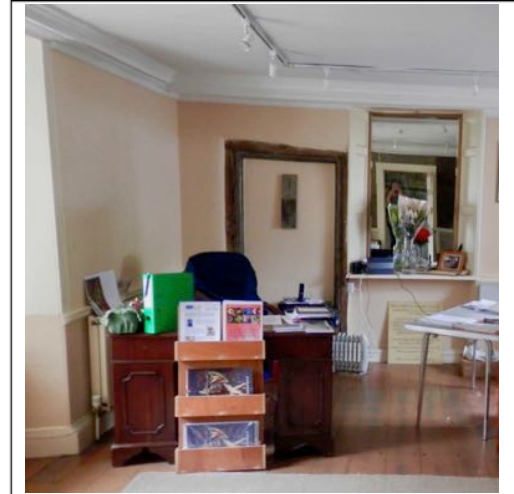


Newsletter

June 2019

Sue's June News

Well here we are almost half way through the year and a busy year it has been for all at Stuart House. At present we are eagerly awaiting the delivery and fitting of our new reception desk – designed to create a ‘proper’ and professional work station for reception. I know that already eyebrows have been raised due to the fact it will be modern – but modern office equipment can only be effectively and safely used at a desk station where knees can fit underneath (though that is never a problem in my case!) and a safe method of working is employed. Just think of the Louvre and the Pyramids and you will get it..... Our May meeting was shorter than usual due to the absence of three trustees – and I should add that each was absent for a very good reason and apologies had been duly given beforehand. We are indeed fortunate to have such a reliable band and it is rare not to have full attendance.



farewell to the old desk and clutter

So nothing really interesting to report; we talked about the loo seats (which are urgently being replaced); the cracks in the House (urgently being investigated); our delight with the new volunteers; forthcoming dates for Arts/Crafts events; general fundraising; and the like. I have to make mention of the garden: it is looking outstanding and Malcolm is to be congratulated. This year we are relieved not to have to worry about broken garden furniture and trying to repair/treat in an effort to give longer life to chairs and tables which had long since gone past their sell by date. Thanks to Malcolm for helping us to keep them as long as possible!

Sue Glencross Hon. Sec.



.....

Over 90 members of the Vernacular Architecture Group led by Carole Vivian spent part of a day of their East Cornwall Spring Conference in Liskeard, and had a look at Stuart House (not all at once though!). There was specialist interest in the roof beams on the top floor. Sioux organised a pasty lunch in the Gallery, where we had hung some material about the restoration of the House. We had also organised a re-print of the Henry Rice Album to ensure enough copies for those interested – plenty remain, at £10 each. A copy of their informative handbook was presented to The House, and is kept in the Surgery.



*Leaflet Sponsored by Coodes
 Honorary Solicitors to Stuart House Trust*

Friends of Stuart House present

Spotlight on Herbs

An Exhibition & Sale

10-22 June - 9:30 to 3:30

All Gardeners & Artists Welcome
Plants and Illustrations display

Also featuring writing, music, gardening etc



Contact: Stuart House, Barras Street, Liskeard PL14 6AB

01579 347347 www.stuarthouse.org.uk

Our two-week herb festival includes

- **WELCOME EVENING** for Friends of Stuart House and their friends
Monday 10th 7pm.
 - **Ilow Splann** in concert
Thursday 13th 7.30pm
 - The House decorated with herbs
 - plants for sale
 - raffle
 - pollinators' awareness
- arts and crafts items, including cards
 - 'Scentscy' goods for sale
 - Ally Sanger watercolours
 - 'do you know' fun (and serious) facts
 - a daily special herbal food in the café
 - local plant businesses
 - a representative of Cornwall Wildlife Trust to answer questions (two days tbc.)
 - photographs of herbs – how many can you identify?
 - herb related products and crafts to buy in the downstairs 'Surgery' shop
 - herb and plant books to peruse and buy
 - make your own herbal teas
 - herbs growing in our garden
- and more*



'Spotlight on Herbs' (see p.2), would appreciate

- More entries for linked art and craft work to be displayed in the Gallery. Free, but donations are welcome. Sioux still has entry forms.
- Stewards for the Gallery
- Empty bottles etc. which have contained herbal products.

South East Cornwall Museums Forum
'Discovering Your Family History & Local History'
Liskeard Public Hall, West Street, Liskeard
Saturday 15th June 2019 10.0am-3.0pm
Free advice & assistance will be available from the following

Cornwall Family History Society	Saltash U3a
Devon Family History Society	Bodmin Museum
Liskeard Museum	Liskeard Library
Saltash Heritage Museum & Local History Centre	Linkinhorne History & Community Archive
Stuart House	Cornwall Regimental Museum
Elliotts Store, Saltash (TPS)	Polperro Family History
Old Cornwall Society	Torpoint Archives
Looe Museum	Lawrence House, Launceston
National Maritime Museum	Still taking bookings - there will be further contributors
Cornwall online Parish Clerks	
Callington Heritage Centre	

Refreshments available **FREE ENTRY**
Further information available on 01752 847800

← The Fourth award-winning 'Discovering Your Family History and Local History' day is to be held on Saturday June 15th in Liskeard's Public Hall. It is organized by the South East Cornwall Museums Forum, of which Stuart House is an active member. We have a stall at this event – why not pop up during the day – the House will stay open until 3.30pm that Saturday, so there is plenty of time to visit 'Spotlight on Herbs' too!

Have you visited Stuart House's new Facebook site yet? We are so grateful to Tim for keeping this active.

CONGRATULATIONS to our Friend Brian Oldham who is the second person to be awarded the George Vaughan-Ellis Memorial Trophy for Outstanding Contribution to the architecture, research and/or heritage of Liskeard. The first person to receive it was our Friend, ex-trustee and ex-Chair Eileen Crouch.

Brian also (among many other things) runs Liskeard's 'Walkers are Welcome', volunteers very actively at the Museum and is President of Liskeard's Old Cornwall Society.

The Old Cornwall Society's Mid-Summers' Eve Bonfire is on Saturday 23rd June, 6.30pm at Bolitho Farm. The monthly talks begin again in September. The OCS's room on the top floor of Stuart House is open on Wednesdays and other times by appointment,

June's Thoughts from our Garden's Overseer.

Gardens change so rapidly at this time of year. At Stuart House, the bluebells, so abundant one moment, are gone the next. This year however we managed to remove most of the seed heads before it was too late – leave them and seedlings will soon appear everywhere. The Spanish type which we have in our garden have wider thicker leaves than their English counterpart and begin to look messy when the flowers have faded. There are two options: either leave them to die back and be covered by the cranesbill geraniums, or pull them off. I prefer the latter, as it gives a much tidier appearance and helps to weaken the penetrating underground bulb network. Recent research has found that we shouldn't worry too much about the Spanish interloper ousting the finer English species - it can hold its own and reproduce faster.

The lawn borders are now dominated by just four sorts of plants: bluebells, hardy geraniums, *Schizostylis* lilies, and Japanese anemones. These battle each other for space and nutrients, yet reliably produce their flowers in succession from Spring to late Autumn. This year they



have been joined by two large *Libertia Grandiflora* plants. I grew these from seeds, tempted by a photograph (prolific white flowers) and description (statuesque, and blooming late Spring to early Summer) in a catalogue. This made them seem ideal for an Elizabethan garden like ours. They have quickly become strongly established clumps and have no problem holding their own. Viewed against the shady background of the far corner of the garden, they look quite dramatic. After flowering, they'll be cut down, but a few seed heads will be left for anyone who'd like to try

growing their own (sow the seeds straight after collecting).

The *Oxalis* that usually wanders wildly around underneath the box hedge has this year ventured up to the top and has needed pulling out. Its pink flowers, though, are quite attractive, especially the group that has taken to peeping precociously through the rear struts of the wooden bench near the plant sales stand.



Further along the path, the *Clematis montana* "Elizabeth" is rampantly



clothing the wall in flower and seems to be making a determined effort to reach the pond. This is an incredibly easy sort to grow: plant it in good moisture-retentive soil, roots in the shade, and where it can climb and spread. It will not disappoint! Also flowering at the moment are the *Viburnum opulus* (the snowball viburnum) against the

woodland wall, and the wisteria over the far arch. The calendulas continue to brighten up the area opposite the garden door.

This year, the *Rosa banksiae* "Lutea" that covers the rear porch has produced its small primrose blooms. This is one of the earliest flowering rambler roses, is very vigorous, evergreen and thankfully thornless. Although it is said to prefer occasional sun, the porch is always in the shade, yet it seems to thrive, even in the poor gravelly soil. I mentioned last



year that my grandson Ethan had suggested tying a couple of the long flailing shoots *downwards* to the supporting porch post. The experiment worked: flowers have appeared. A rooted cutting taken from it last year has been planted a little further along to replace the jasmine, seen off by last year's bitterly cold March.

Incidentally, many plant species carry the name *banksiae*. They are named after Sir Joseph Banks,

1743 – 1820. Banks took part in Captain James Cook's first great voyage (1768–1771) and is credited for bringing 30,000 plant specimens to this country. He held the position of President of the Royal Society for over 41 years and made Kew the world's leading botanical gardens.

Bindweed and deadnettle roots are weaving their woeful ways through the beds. A volunteer or two willing to blitz these occasionally would be most welcome!
Malcolm Mort

**Could YOU be a
bindweed-blitzer?**

If so, please contact
Malcolm or Sioux in
the House.

STUART HOUSE GARDEN CLUB

The next Meeting is

Monday 24th June

11.30am to 1.30pm

new members welcome

*contact Val Moore via the House or on
01579 228518*



North Hill Art and Craft Group

Proudly presents

An

Art Exhibition



Of our work

Stuart House, Liskeard

Monday 3rd to Saturday 8th June

9.30 - 4.00 pm

Admission Free

Everyone welcome to view

Some art work for sale

COMING IN JUNE

We greatly look forward to the North Hill Art and Craft Group exhibiting and selling for the third year in the Max Lock Gallery.

Ilow Splann (Carlton Crouch and Maggie Wilmott) Stuart House Sunday 12th May 2019.



An enthusiastic audience watched in rapture as Carlton and Maggie (Ilow Splann) played an amazing range of instruments of the early music period. They came exotically dressed in medieval costume: Maggie in a beautiful, flowing, dress and Carlton in a spectacular tunic, tights and hat. This set the theme for the music and complemented their

playing and presentation. The audience had the added amazement of how Carlton managed to set up the instrument straps without tangling his clothes or hat!

The performance started with Carlton on the border bagpipes. It took time to pump up the bladder pressure high enough up to produce a sound, which he then had to sustain by continuing to pump with his arm whilst playing the tune and using the drone as accompaniment. Maggie played the bodhran drum, enhancing a good, foot tapping, rhythm. The audience was instantly fully engaged. Thereafter they played a variety of instruments: the violin, bazooka, various recorders and wind instruments (including the bombard with two reeds) either accompanied by the keyboard as a harpsichord or the bodhran drum. Their recorder playing characterised some beautiful harmonics – when a pure sound resonates with, and is enhanced by, the player's sinus cavities. This gave an especially full and pure sound, not achievable by all players.

They also sang songs of love, one being the first song known to have been written down. Another was supposedly written by Henry VIII, possibly for one of his wives - if any courtier actually wrote the piece, they would wisely not have challenged Henry's claim to it! The early music has a very particular sound as at that time they were less interested in harmonies than in complementary and overlapping melodies.

In contrast, Maggie and Carlton ended the performance with part of a Baroque sonata by Telemann and some recorder duets by Naudot. - quite an extraordinary change in style from the early music they had been playing to one where the idea of harmonising was developing.

Ilow Splann are playing at our herb festival : Thursday 13th June at 7.30pm.

Every time this Duo performs they demonstrate their incredible musical versatility with an ever growing range of instruments and styles.

Anglea Wunnam, our concert series co-ordinator



NEXT SERIES' CONCERT Sunday 30th June at 2.30pm.

Jazz Tapas is a group of musicians from Liskeard and Lanreath, 3 from the same family, who play an energetic mix of Jazz and Latin music guaranteed to get your toes tapping and a smile on your face!

Helen White - vocals, violin and sax
John White - vocals, guitar and percussion

Pete White - Guitar and Bass
Steve Ayre - Trumpet

EVENTS in the MAX LOCK GALLERY in the PAST MONTH



Emma Clare Bennett's 'Material Landscape' exhibition, running from 7th to 11th May, was a privilege to show. On the Saturday morning, she gave a talk about her work, and we heard how she moved from more representational work into abstract, showing human control of nature. Many works were done on the moor, using sub-soil and quarry water, and acrylic paint which, when added, pushes away the subsoil with extraordinary effect.

Esther Berry, as the winner of a student competition, had a work hung alongside. Emma hopes to organize more exhibitions including students' work in the Gallery.

A comment in the Visitors' Book (a visitor from Leicester) summed it up: "wonderful collection of work – great to see this standard of art in such an historic building. Well done."



The West Country Embroiderers

put on a stunning exhibition of textile work (*this general photo does it no justice, ed.*) in the Gallery and the Jane Room from 15th to 19th of May. There was a glorious and inspiring mixture of techniques and forms, beautifully presented, and it was wonderful to be able to look really closely, as well as seeing the overall effects.

Kim Thane was the artist of the month in the Surgery in May. She is local, living on the south coast, and has been drawing and painting since childhood but has only recently begun exhibiting and selling. We are sorry for the confusion over Kim's surname in the last Newsletter. Kim wished visitors 'happy browsing', which there was certainly a lot of!



Diary of Events

June 2019



Tuesdays 4 th , 18 th	Liskeard Writers' Group meet 2 – 4.30 pm
Monday 3 rd – Saturday 8 th	North Hill Art Group (see p.5)
every Thursday	Craft Club: all welcome 12 noon to 3pm
Monday 10 th	Liskeard Poetry Group meet 4 to 6.30pm
Monday 10 th – Saturday 22 nd	Spotlight on Herbs (see pp.2&3)
Monday 10 th June	Evening for Friends and their friends : a preview of Spotlight on Herbs. 7pm, all welcome.
Thursday 13 th	Ilow Splann in concert for 'Spotlight on Herbs' 7.30 £7 in advance or at the door (see p.6)
Saturday 15 th	South-East Cornwall Museums Forum 4 th Family History and Heritage Day in the Public Hall (with a Stuart House presence) 10am to 3pm, free (see p.3)
Monday 24 th	Gardening Club 11.30am to 1.30pm (see p.5)
Tuesday 25 th	Fake or Fortune – antiques valuation with Richard Hamm of Bearnas, Hampton & Littlewood. 10am. to 12 noon
Saturday 29 th	Poetry workshop and Performance 10am to 9pm. The evening Performance is open to the public – ask in the House for details
Sunday 30 th	Jazz Tapas in concert 2.30pm. Tickets £7 in advance or at the door, complimentary refreshments (see p.6)
Events coming in July	<ul style="list-style-type: none"> • Chrissie Rivers is the artist of the month in the Surgery • Rose Gibbon and group Art Exhibition (8th – 13th) • Val Moore and Friends Art (15th – 20th) • Arts and Crafts Shop in the Surgery (from 22nd) • Alan Kingwell Art (July 29th – August 10th)

The House, Garden, Old Kitchen Café and (check first) Computer Research Facility are open 9.30am – 3.30pm each weekday and until 12.30 pm (Café 12 noon) on Saturdays. The House is open at these times for all events unless stated otherwise.

Articles, information, notices and photographs for the Stuart House Newsletter to the editor, please (who must reserve the right to edit as necessary), before 25th of the month for inclusion in the next newsletter. Leave with Sioux in the Office or email to rachelpbennett59@gmail.com